



## Slip-On Line (SS) GP800

Product code: **S-A8SO1-HWSS** EC

The Slip-On is the first stage in transforming your exhaust system. In addition to increasing your power, the Akrapovič Slip-On system gives your scooter a distinctive deeper sound and also changes its visual appearance. Even from afar you can see and hear that this is no mass-produced system. This system was developed based on rich experience and the result is a product that suits a scooter perfectly. Installation is a snap. EC type-approval is valid only when optional catalytic converter is installed.

The Akrapovič exhaust system increases your engine power and its torque at practically every rpm.

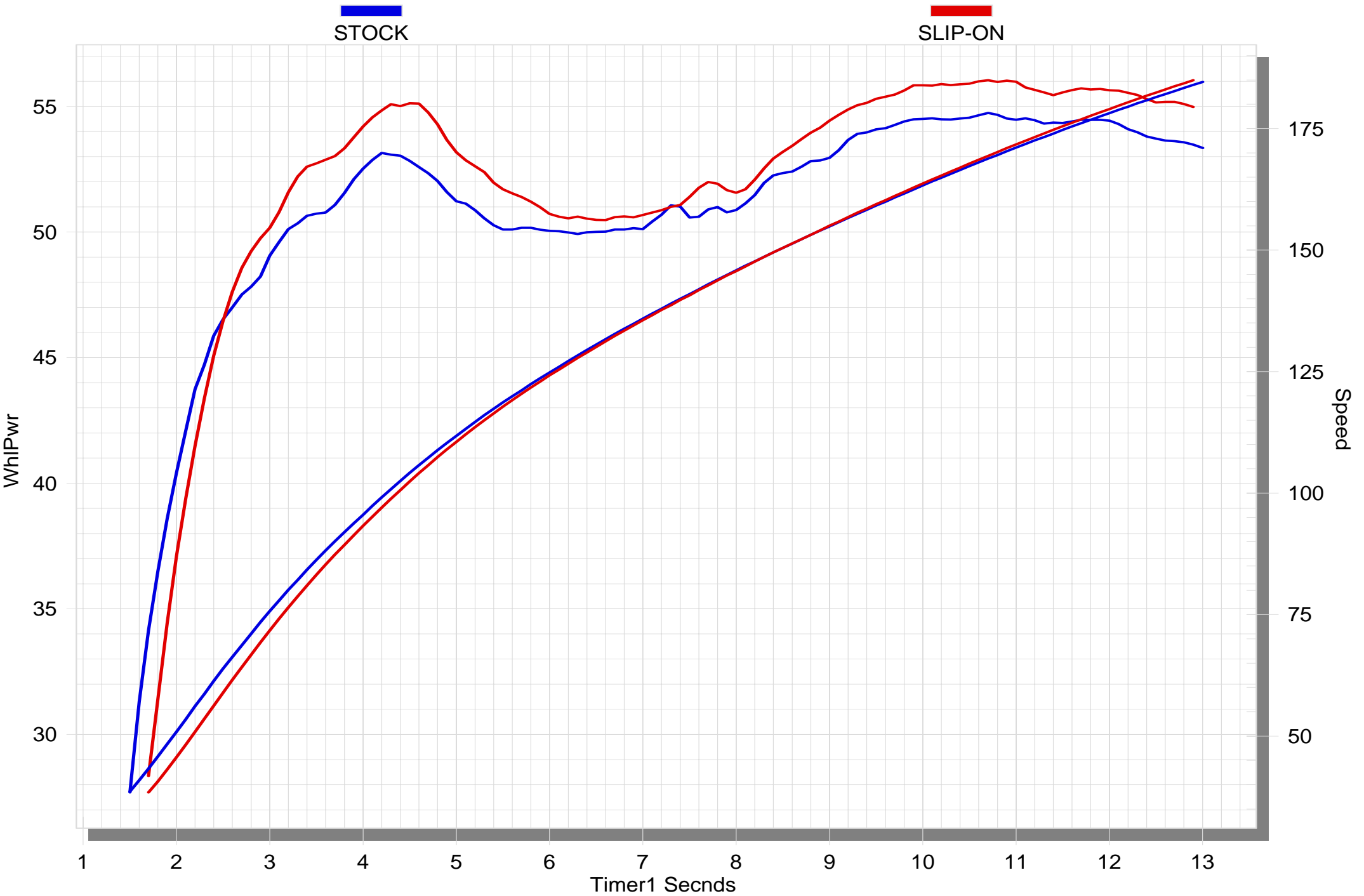
<b>TECHNICAL DATA</b>	<b>UNIT</b>	<b>STOCK</b>	<b>AKRAPOVIČ</b>	<b>MAX. GAIN</b>
maximum power	kW	40.2 at 7650 rpm	41.2 at 7700 rpm	+ 2.3 at 6500 rpm
	HP (m)	54.7 at 7650 rpm	56 at 7700 rpm	+ 3.1 at 6500 rpm
	HP (i)	54 at 7650 rpm	55.2 at 7700 rpm	+ 3.1 at 6500 rpm
maximum torque	Nm	58.4 at 6450 rpm	60.7 at 6600 rpm	+ 2.2 at 6550 rpm
	lb-ft	43.1 at 6450 rpm	44.8 at 6600 rpm	+ 1.6 at 6550 rpm
weight	kg	5.8	2.9	- 2.9
	lb	12.8	6.4	- 6.4
static noise level	dB	93	93	0
	rpm	3875	3875	0

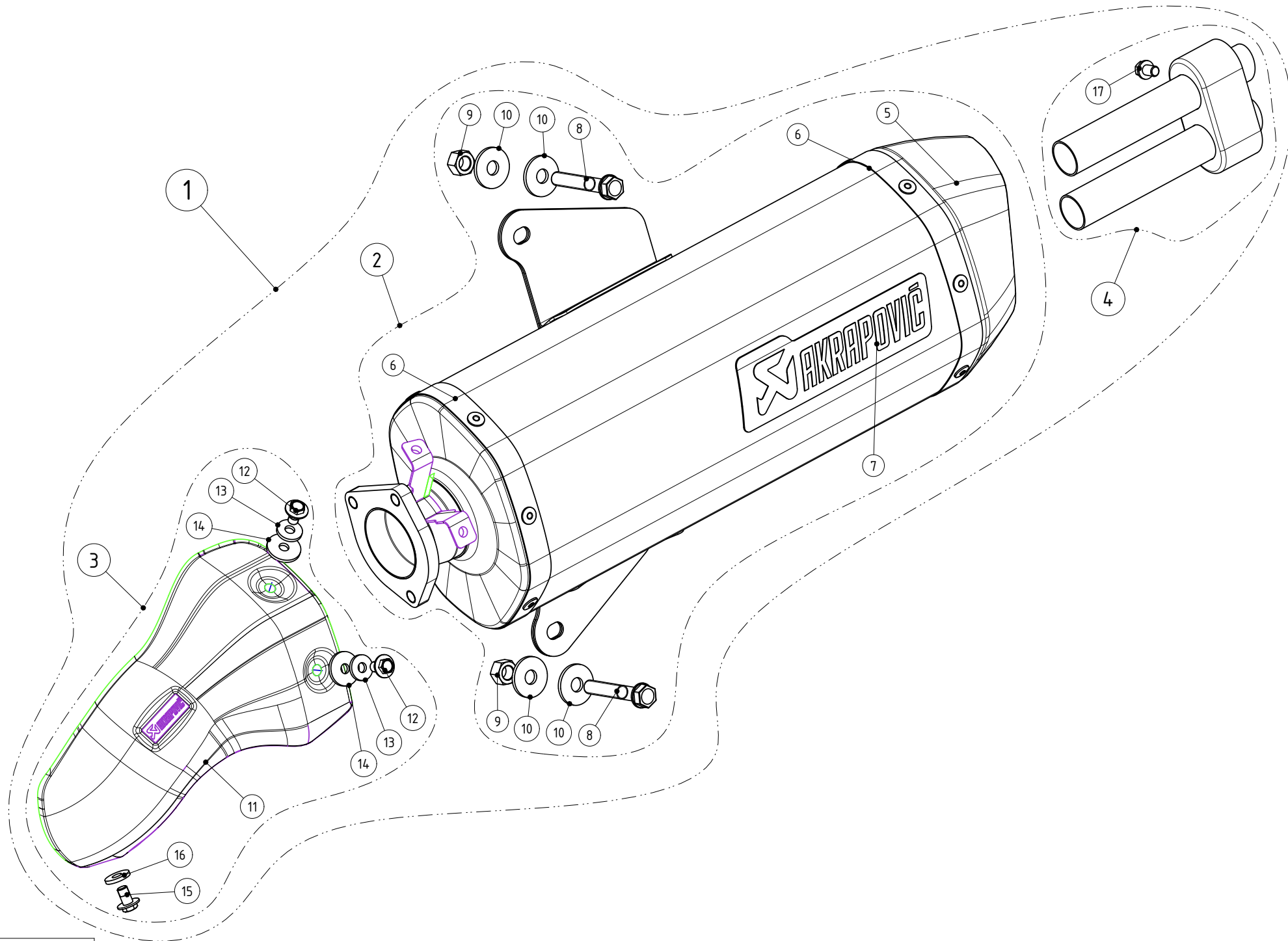
measured with: Gilera GP 800 2012

## Optional Parts

Product name: **Catalytic converter**  
Product code: **P-KAT-028**

# GILERA GP 800





MUFFLER REPAIR KITS	
REPACK	18
SLEEVE	19

No.	SALES CODE	DESCRIPTION	QTY.
1	S-A8SO1-HWSS	slip on system	1
2	M-HW00402SS	muffler	1
3	P-HSG8CA1	heat shield CA	1
4	V-TUV124/L	insert SS	1
5	V-EC185	end cap CA	1
6	P-TT55	belt TI for TI sleeve	2
7	P-HST2AL	sticker	1
8	P-FB24	bolt	2
9	P-FN4	nut	2
10	P-DR4	washer SS	4
11	P-HSG8CA2	heat shield CA	1
12	P-FB50	bolt	2
13	P-DRH4/BAR316	heat resistant washer	2
14	P-DRH2/BAR316	washer SS	2
15	P-FB75	bolt	1
16	DRH3/BAR316	washer SS	1
17	P-FB28	bolt	1